



# MARYLAND SEFEL PYRAMID MODEL Newsletter

2020 Year in Review

For this edition of our newsletter, we are stepping away from reporting on monthly activities to take a moment to look back on the many activities and accomplishments that our collective community dedicated to the SEFEL Pyramid Model here in Maryland accomplished throughout the year – see our 2020 year in review below.

## INITIATIVES & RESOURCES FROM 2020

### *Last Year's NCPMI Guidance*

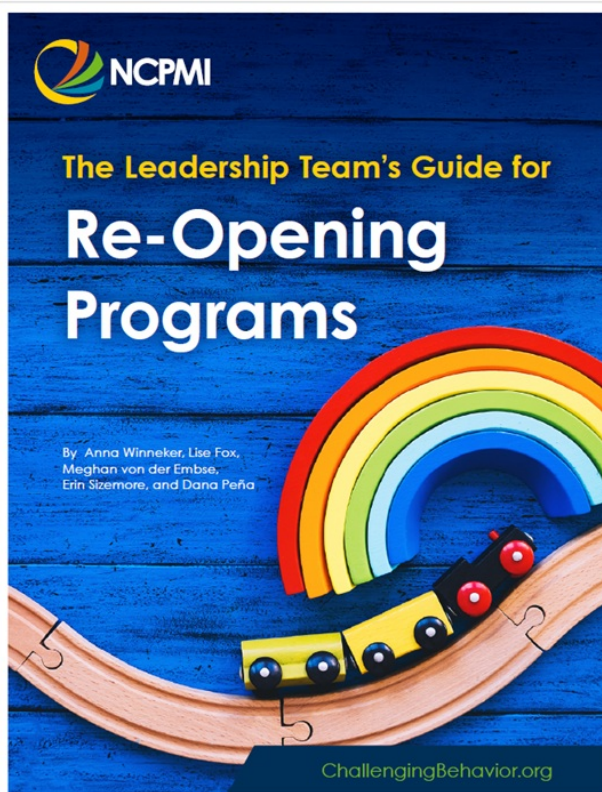


National Center for  
**Pyramid Model  
INNOVATIONS**

### **Early Childhood Mental Health Consultation ECMHC**

Infant Early Childhood Mental Health Consultation (IECMHC) is prevention-based service that pairs a mental health consultant with families and adults who work with infants and young children in the different settings where they learn and grow,...

[Read more](#)  
[challengingbehavior.cbcs.us...](http://challengingbehavior.cbcs.us...)



## Practice-Based Coaching Pyramid Model

Home Implementation Coaching Practice-based coaching is a cyclical process for guiding practitioners' use of evidence-based practices for promoting positive child outcomes. Practice-based coaching involves the following components: collaborative...

[Read more](#)  
challengingbehavior.cbcs.us...



## Pyramid Model Equity Coaching Guide

By Jolene Ferro, Lise Fox, Denise Binder, and Meghan von der Embse



## Equity Coaching Guide

The Pyramid Model Equity Coaching Guide provides the classroom coach with a reflection tool to examine the implementation of Pyramid Model practices through the lens of culturally responsive practices and identification of implicit bias. The...

[Read more](#)  
challengingbehavior.cbcs.us...

## Behavior Incident Report System:

Data-Based Decision-Making Guide



Developed by:  
Meghan von der Embse  
Jolene Ferro  
Denise Perez Binder  
Myma Vega/ika  
Lise Fox



## Data Decision-Making

Home Implementation Data Decision-Making Behavior Incident Report System The Behavior Incident Report System (BIRS) provides early care and education programs and classrooms with a system to collect and analyze behavior incidents in their program.

[Read more](#)  
challengingbehavior.cbcs.us...

## State Leadership Team Activity

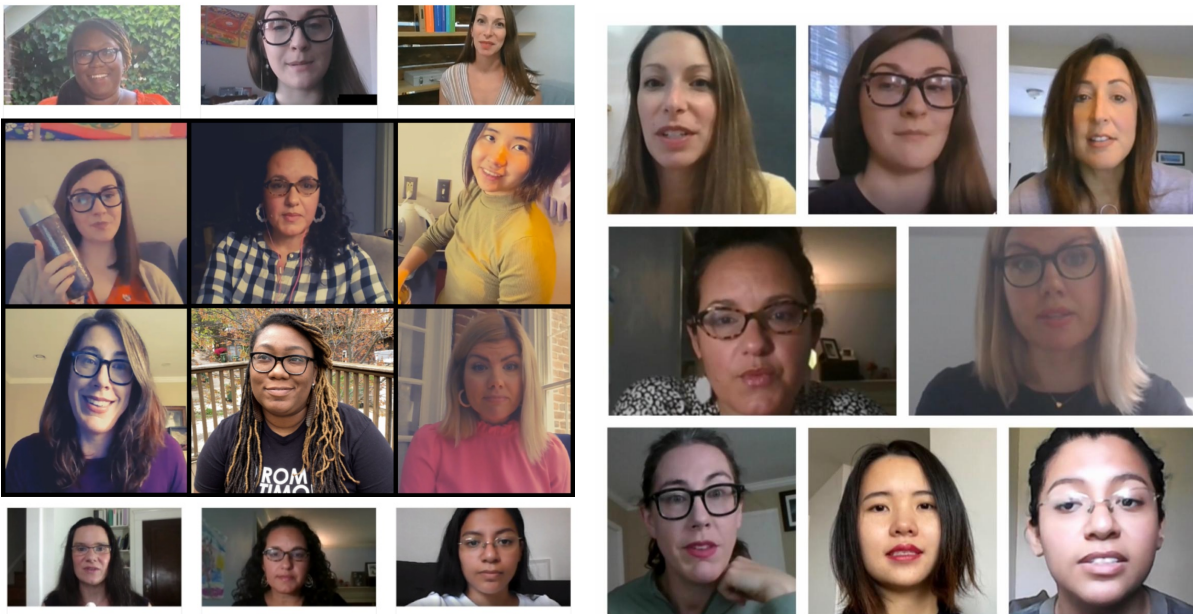
The State Leadership Team continued to meet each month with a focus on how

to continue to support the work of addressing the needs of children's social and emotional health while they are out of classrooms. Additionally, significant conversation focused on the role of the PM to address and support the elevation of strategies to address equity and anti-racism in the classroom, following the protests against police brutality and racism.

**The Elevating Equity Subcommittee** of the State Leadership Team (SLT) is developing a workplan for several components of the model using an equity lens. Specific goals include defining language around anti-racism and equity as it relates to early childhood, reviewing and updating the SLT's vision and mission statements, and updating training content and coaching materials.

## COVID-19 RESPONSE

### *"Coping with COVID" Vlog Series*



The PIEC Team at the University of Maryland's School of Social Work's Institute for Innovation and Implementation wanted to reach out with a message of support during this unprecedented time as classrooms are delivered via computer screens, childcare struggles to re-open amid new protocol, with families struggling to manage these unmatched, unexpected scenarios.

We have almost 20 episodes discussing caregiver stress, discussing changes with very young children grief and loss, and equity and anti-racism as it impacts the work of early childhood.

Check out the series by clicking the link below.

<https://www.mdpyramidmodelsefel.org/blog>

### *Transforming to Online*

Despite the shift to tele-work during COVID-19, virtual training is back up and has been booming over the summer and into the fall. Throughout the summer, virtual trainings in the





Pyramid Model have occurred in Montgomery, Queen Anne's, Prince George's, Talbot, Frederick and Washington Counties. Way to go Pyramid Model trainers!

Coaching, an important part of Pyramid Model implementation, is scheduled to start in Frederick, Harford and Queen Anne's counties.

### **Looking to brush up on your SEFEL Pyramid Model Knowledge?**

Don't forget to check out our online trainings! The trainings are self paced and are all approved for up to 18 MSDE COK clock hours. The Preschool Modules were updated in 2019 and include great new information about social and emotional development with new technology to make a fun and engaging online training experience.

[Click here to access the trainings!](#)

### *Facilitated Conversations for Infant & Early Childhood Mental Health Consultants*



In May 2020, the PIEC Team launched a series of facilitated community conversations focused on infant and early childhood mental health consultation and all of the related implications for the child care and early education workforce, and our youngest children and their families, during this unprecedented time COVID-19 response. Consultants, providers, advocates, & Directors and Administrators represented a range of organizations including:

Abilities Network  
 APPLES for Children  
 Arundel Child Care Connections  
 Baltimore County Public Schools  
 Carroll County Youth Service Bureau  
 Cecil County Public Schools  
 Chesapeake Child Care Resource Center

Family Services  
Frederick County Family Partnership  
Greenbelt Children's Center  
Howard County Child Care Resource Center  
Human Services Program of Carroll County  
Kent Family Center  
Maryland Family Network  
Maryland State Department of Education  
Mental Health Association of Frederick County  
Montgomery County Government  
Play Centers  
Prince George's Child Resource Center  
Prince George's County Public Schools  
Promise Resource Center  
Salisbury University  
St. Paul Lutheran School Catonsville  
St. Thomas' Preschool  
The Coordinating Center  
The Family Tree  
Time Organization  
Towson University  
University of Maryland School of Social Work  
Wicomico County Public Schools  
Wicomico County Government  
YMCA of Cumberland MD

The conversation appropriately spanned many topics that all focused on how consultation programs and child care providers are pivoting now to continue to support children and families – and what the future will hold. Themes included topics such as:

- Programs ***struggling to continue to engage families***, who themselves are overwhelmed and in survival mode, and seemingly are not as responsive as they had been previously.
- ***Anxiety about reopening***, what centers will need and if the workforce will be willing, what children and their caregivers will need to feel safe – and what protocols to ensure health and safety will impact social emotional learning practices.
- The importance of the early childhood workforce to ***focus on adults*** (parents, caregivers, child care providers and educators) and support their stress responses during this time. Don't under-estimate the impact of small interactions, checking in on how the adults are doing, when they are managing big and small stresses without clarity.

Biweekly office hours on Wednesdays are offered as a drop-in opportunity for consultants to discuss what they are seeing and what supports they need.

## *Maryland's Build-A-Plan/Recovery Guide*

### **Maryland Child Care COVID-19 Response & Preparedness Plan**

The Build-A-Plan Tool helps center-based & family child care providers develop a



plan to follow state regulations & guidance, use best practices to limit the spread of COVID-19, and make decisions that are feasible and work best for them.

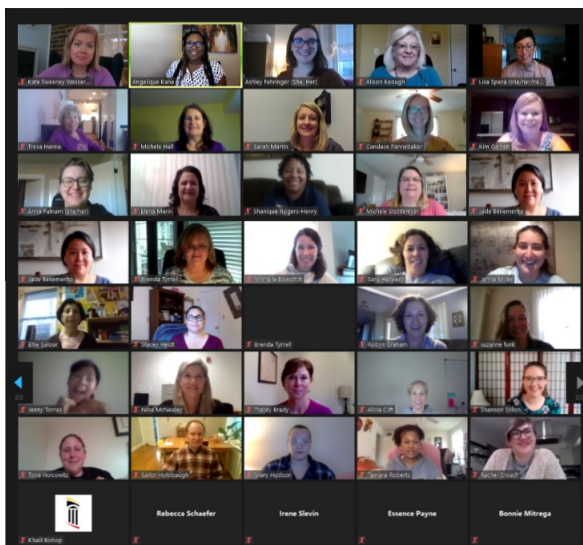
[Read more](https://survey.alchemer.com)  
[survey.alchemer.com](https://survey.alchemer.com)

## 2020 PYRAMID MODEL TRAINING ACTIVITY

### *Training to Become a Maryland SEFEL Pyramid Model Trainer (TOT)*

Maryland has been dedicated to supporting trainers through the state in the Pyramid Model for over a decade now. The Maryland SEFEL Pyramid Model leadership in partnership with MSDE's credentialing office aligned practices for this model with other TOT and training requirements for the workforce. In addition to offering annual meetings, we implemented the following requirements:

1. All trainers must use the updated slides and updated Titles and Credit Hours located in the Trainer's Corner on the Home Page of the [Maryland SEFEL Pyramid Model website](https://www.mdpyramidmodelsefel.org)
2. Recertification every 4 years by attending the modified TOT (provided annually by the University of Maryland School of Social Work)



The PIEC team concluded the Fall 2020 Training of Trainers (TOT) series that certified 35 new trainers in the Pyramid Model.

For support in your region of Maryland, you may visit <https://www.mdpyramidmodelsefel.org/local-experts> for a list of state-certified trainers.

Visit the website to check out the vision boards participants created!

### *Renewal & Updates to the Pyramid Model CPD Course*

Over the past several years the Pyramid Model has expanded within the public school systems, as such, there is a growing need to align the Pyramid Model

work occurring in center-based care, family childcare centers and the public school system. To that end, this year the University of Maryland PIEC Team with the support of the Maryland Pyramid Model Master Cadre of Trainers submitted for renewal and received approval for the Continuing Professional Development (CPD) credits for the Pyramid Model training.

Not only does the new CPD course included updated content, it also includes opportunities for teachers to get CPD credits for completing Practice Based Coaching hours. This step brings us closer to achieving high fidelity Pyramid Model implementation with increased use of follow-up coaching.

**Share Your Ideas or Questions With Us!**



[Click here to reach us](#)

[www.mdpyramidmodelsefel.org](http://www.mdpyramidmodelsefel.org)