



# MARYLAND SEFEL PYRAMID MODEL Newsletter

August 2020

## SEFEL Pyramid Model in Maryland

[Visit our website](#)

Come follow us on social media where we share week-day posts surrounding positive social emotional learning.



**Facebook:**  
Maryland  
Pyramid  
Model

[www.facebook.com/MDPyramidModel](http://www.facebook.com/MDPyramidModel)



**Instagram:**

@MDpyramidmodel  
[www.instagram.com/mdpyramidmodel](http://www.instagram.com/mdpyramidmodel)



**Twitter:**  
@MDpyramid

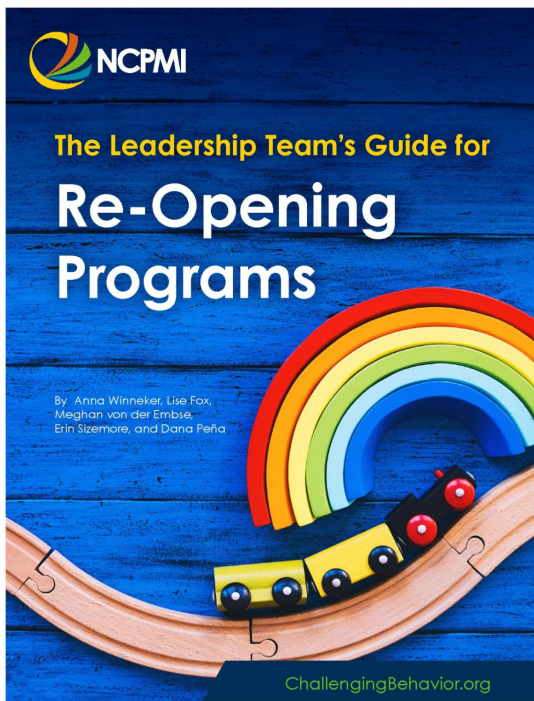
[www.twitter.com/mdpyramid](http://www.twitter.com/mdpyramid)

## WHAT'S NEW?

**ATTENTION PROGRAM LEADERS!**  
*NEW Pyramid Model Resource*

**"The Leadership  
Team's Guide for  
Re-Opening  
Programs"**

Early childhood programs are re-opening after closure due to the pandemic or changing procedures

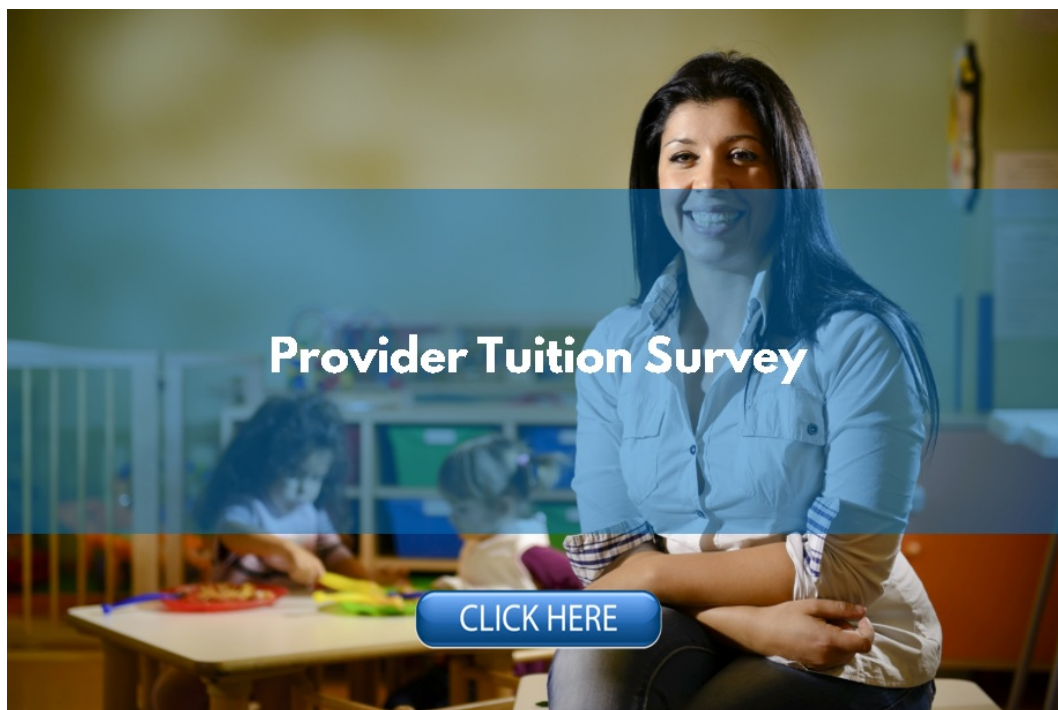


in response to health and safety guidance. We developed this guide to provide information on how programs can use Pyramid Model strategies to provide predictable and nurturing environments that are supportive of children, teachers, and families.

Available from the NPCMI resource library:  
<https://challengingbehavior.org/resources>

Available from the NCPMI Emergency Page, Re-Opening Early Childhood Programs accordion:  
<https://challengingbehavior.org/emergency/index.html#reopen>

## Child Care Scholarships



### Child Care Scholarship Program

The Child Care Scholarship (CCS) (formerly known as Child Care Subsidy) Program provides financial assistance with child care costs to eligible working families in Maryland. The program is managed through a centralized vendor -- Child Care...

[Read more](#)

## Special Needs Training and Technical Assistance for Infants and Toddlers



### Special Needs Training and Technical Assistance for...

If your program provides care for children under 3 years old, you may be eligible to receive professional development at over 75% off!

[Read more](#)  
ccrcbc.com

## TRAINING AND COACHING ACTIVITIES

Due to the changes in school and childcare program operations to help prevent the spread of COVID-19, training and coaching activities have been suspended and we transitioned to delivering online training.

If you are a **Maryland State Approved Pyramid Model Trainer**, please check out the recording of a webinar delivered at the beginning of May on how to make your Pyramid Model trainings virtual (located under the resources tab of the [Trainers Corner](#)).

\*\*Help us tell our state story! Register for the state Outcomes Monitoring System (OMS) and start entering your training and coaching data today.

### SEFEL OMS

SEFEL OMS

ABOUT SEFEL REQUEST ACCESS LOGIN

\*Required

Email (Username)\*:

Password\*:

Re-type Password\*:

First Name\*:

Last Name\*:

Gender\*: ☐ Male ☐ Female

Race/Ethnicity\*: 

American Indian or Alaska Native

Asian

Black or African American

Native Hawaiian/Other Pacific Islander

White

Hispanic or Latino

Hold Ctrl/Cmd or Shift to select multiple

Age Range\*: ☐ <21 ☐ 21-30 ☐ 31-40 ☐ 41-50 ☐ 51-60 ☐ >60 ☐ Prefer not to disclose

User Type\*:

Submit

# STATE LEADERSHIP TEAM

The State Leadership Team continued to meet during this month, with a focus on how to continue to support the work of addressing the needs of children's social and emotional health while they are out of classrooms. Additionally, significant conversation focused on the role of the PM to address and support the elevation of strategies to address equity and anti-racism in the classroom, following the protests against police brutality and racism.

[Read Minutes from the most recent State Leadership Team Meeting](#)

## EARLY CHILDHOOD NEWS



### Covid-19 proves childcare in the US is broken - can it...

Years ago, when our three children were small, my husband and I were caught in a catch-22 familiar to many working-class families. Our kids had serious medical issues, but we couldn't afford the treatment they needed; my husband's employer only...

[Read more](#)

[www.theguardian.com](http://www.theguardian.com)



### Superintendent Stresses 'Flexibility' for Local Schools...

Almost one month away from the beginning of the academic year, Maryland's



### 5 Top Takeaways from the Conversation: 'How to Safely...

Because we can't take our Early Learning Nation Studio on the road during



### Teachers Support Online Classes, Worry About Internet Access

PRINCE GEORGE'S COUNTY, MD - Teachers



schools superintendent on Wednesday provided additional guidance for public schools as they set their reopening plans during the COVID-19 outbreak. But she left it to the...

[Read more](#)  
[www.marylandmatters.org](http://www.marylandmatters.org)

this time, stay tuned as ELN recaps Top Takeaways from important webinars, chats and virtual events from the Early Learning field. Join the conversation! And visit our...

[Read more](#)  
[earlylearningnation.com](http://earlylearningnation.com)

rejoiced when the school system announced that classes would be online until at least January. The Prince George's County Educators' Association, a local teachers union, voiced its support on Thursday. "Our...

[Read more](#)  
[patch.com](http://patch.com)

## PROFESSIONAL DEVELOPMENT



### Statewide Training Calendar | Maryland Family Network

Statewide Training Clearinghouse Calendar

[Read more](#)  
[www.marylandfamilynetwork.org](http://www.marylandfamilynetwork.org)



### Education Manager Series: Creating Inclusive Classrooms...

In this webinar, explore how education managers can support education staff to implement effective, evidence-based teaching practices and create inclusive classrooms. Learn how ongoing professional development supports this effort and explore...

[Read more](#)  
[eclkc.ohs.acf.hhs.gov](http://eclkc.ohs.acf.hhs.gov)



### Lead-Safe Toolkit for Home Based Child Care Series- Lead ...

Join us August 4, 2020 for the final webinar in the Lead Safe Toolkit series to learn how children may be exposed to lead while handling consumer products.

[Read more](#)  
[info.childcareaware.org](http://info.childcareaware.org)

## STRATEGIES CORNER



## Talking to Children Authentically about Race and Racism

PBS KIDS for Parents hosted this important conversation - featuring fellow parents, educators and child development and trauma experts - about how you can ...

[Read more](http://www.youtube.com)  
www.youtube.com



## Welcome! You are invited to join a webinar: NBI Leaders...

This month, Joy Osofsky, Ph.D. will be presenting her talk titled Addressing Prenatal Risk: The Mother Infant Support Team.

[Read more](http://bostonchildrens.zoom.us)  
bostonchildrens.zoom.us

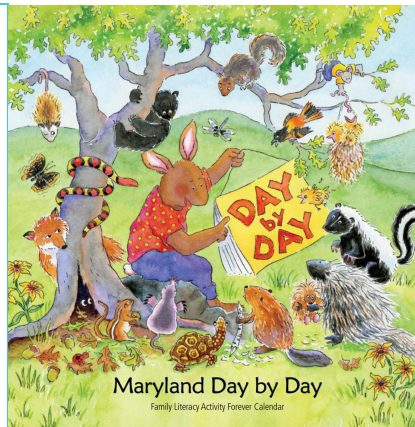
## Fun Summer Activities



## Fun Ideas for Family Engagement: Summer

Families can still create great memories. Fun Ideas for Family Engagement: Summer All early care and education providers can support families by helping them to find consistent medical care and encouraging them to have their children monitored...

[Read more](http://marylandfamiliesengage.org)  
marylandfamiliesengage.org



The Maryland Day by Day Family Literacy Forever Calendar offers fun, easy-to-do activities for every month of the year. August is imagination month!

You can download the calendar by clicking on the picture or at this [link](#).



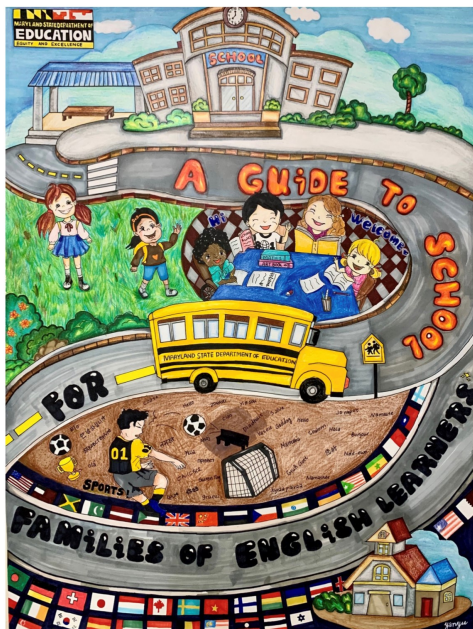
## Thinkport.org | Leaders in Educational Products

Home - Summer On! MPT invites you to day-camp from home this summer with cool crafts and activities from PBS KIDS. These fun weekly themes will keep kids ages 2-8 laughing, crafting and learning.

[Read more](http://www.thinkport.org)  
www.thinkport.org

## A Guide to School for Families of English Learners

In partnership with MSDE's Title III Office, the Maryland State Advisory Council for English Learners has released A Guide to

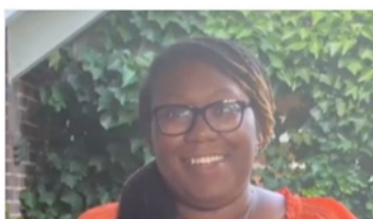


School for Families of English Learners for families new to the country and families of English learners. This guide, which provides resources for families beginning in early childhood, has been developed to help families understand the school system and offers suggestions for how to support children's learning and family engagement. This Guide provides information about Maryland's early childhood system, including how to enroll a child in early childhood programs, support transition to school, and connect parents and families to additional supports.

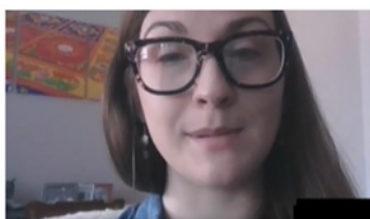
Click the picture or [here](#) to view.

## Check out a Vlog Series!

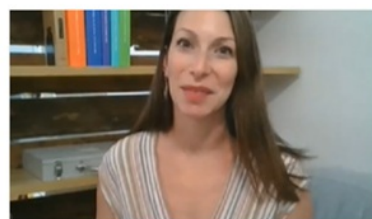
Have you seen the latest episodes of the PIEC Team weekly vlog series? Check them out [here](#) and send us comments about what you are seeing in your community.



Episode 15 - July 23, 2020



Episode 14 - July 16, 2020



Episode 13 - July 9, 2020



### Thrive With Your Family Web Series

A series of candid conversations about parenting, child behavior, mental health and relationships during the ever-changing environment of our current global pandemic.

[Read more](#)  
www.mottchildren.org



### The Well-Being Series

Mental Wellness Is Critical During Coronavirus. We're all adapting to a New Normal. Coronavirus has changed our jobs, our homes, our kids' schooling. None of us know what's coming next. And nor do our kids.

[Read more](#)  
mhccnetwork.org



# UPCOMING EVENTS



## Conference by the Sea 2020 | Maryland State Childcare...

In light of the current global climate, it is more important than ever for the child care community to connect with one another, strategize and share ideas, all in a safe, responsible way.

[Read more](#)  
mscca.org



## 2020 SEL Exchange | October 14-16, 2020

The 2020 SEL Exchange, hosted by the Collaborative for Academic, Social and Emotional Learning (CASEL), will be October 14-16, 2020 in the Chicagoland area.

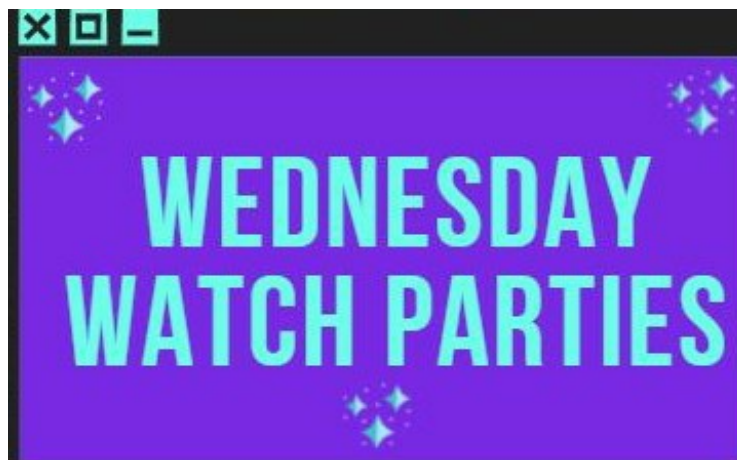
[Read more](#)  
selexchange.casel.org



## Heart-Centered Leadership: Create an Inspiring Work...

Sponsored by Nature Explore. Working with children is joyful and rewarding but it also takes great reserves of strength and energy. Discover ways to use heart-centered leadership techniques to support teachers while creating a foundation for a...

[Read more](#)  
www.earlychildhoodwebinars.com



## Wednesday Watch Parties "Shorts," Lunch. Learn. Listen....

During WWP "Shorts," the Lunch, Learn, and Listen edition, encourage parents and families to



gather the little ones to learn a short activity then listen to a short story together during lunch at 12:30 p.m.! #MDFamiliesEngage #InThisTogether...

[Read more](#)

[marylandfamiliesengage.org](http://marylandfamiliesengage.org)

Please email [the PIEC Team](#) to have any upcoming trainings or events you are hosting featured in the newsletter!

Share Anything About Your Work With Us!



[Click here to reach us](#)

[www.mdpyramidmodelsefel.org](http://www.mdpyramidmodelsefel.org)