



SEFEL NEWSLETTER

July 2018

We've officially reached 300 subscribers!!!



Thank you for your continuous engagement in the SEFEL community through your work and support of SEFEL initiatives, including this newsletter. We appreciate all that you do!

SEFEL In Maryland



Margo and Kate delivered a two-day training to Frederick County's Infants and Toddler's team and some invited local providers and partners tailored SEFEL Content to the work of 0-3 early intervention providers, screening for social-emotional needs, as well as a focus on trauma-informed work and considerations for caregiver mental health and stress.



Close to 50 providers from around the state attended a two-day TPOT (Teaching Pyramid Observation Tool) Training hosted by MSDE and the University of Maryland Baltimore and presented by the Pyramid Model Consortium. At completion of the training and exam, attendees became certified as reliable observers in the use of the TPOT in preschool classrooms.

Resources

The National Center for Pyramid Model Innovations (NCPMI)

The goals of the Center are to assist states and programs in their implementation of sustainable systems for the implementation of the Pyramid Model for Supporting Social

Emotional Competence in Infants and Young Children (Pyramid Model) within early intervention and early education programs with a focus on promoting the social, emotional, and behavioral outcomes of young children birth to five, reducing the use of inappropriate discipline practices, promoting family engagement, using data for decision-making, integrating early childhood and infant mental health consultation and fostering inclusion. [Learn more...](#)



Live Webinar Training Schedule Upcoming

This website was made possible by Cooperative Agreement # H326B170003 which is funded by the U.S. Department of Education, Office of Special Education Programs. However, those contents do not necessarily represent the policy of the Department of...

[Read more](#)
challengingbehavior.cbcs.us...

Webinar Recording: Giving Immigrant Children a Voice



Giving Immigrant Children a Voice: Understanding Traumatic Separation

In this webinar, speakers focus on helping providers, current caregivers, and others understand and recognize the effects of Traumatic Separation in immigrant children of different ages, understand immigrant children's prior trauma experiences, and provide practical suggestions for how to support immigrant children who have been separated from parents and siblings.

July 10, 2018

9:00 to 10:30 AM PT / 12:00 to 1:30 PM ET

<https://learn.nctsn.org/ctg>

Judy Cohen, MD, Allegheny General Hospital
Stacey Frymier LPCC, LPAT-ATR, IMH-E® (IV-C), Las
Cumbres Community Services, Inc.

Megan Delano, MSW, Las Cumbres Community
Services, Inc.

Javier Rosado, PhD, Florida State University College
of Medicine

Saida Abdi, LICSW, Boston Children's Hospital
Refugee Trauma and Resilience Center

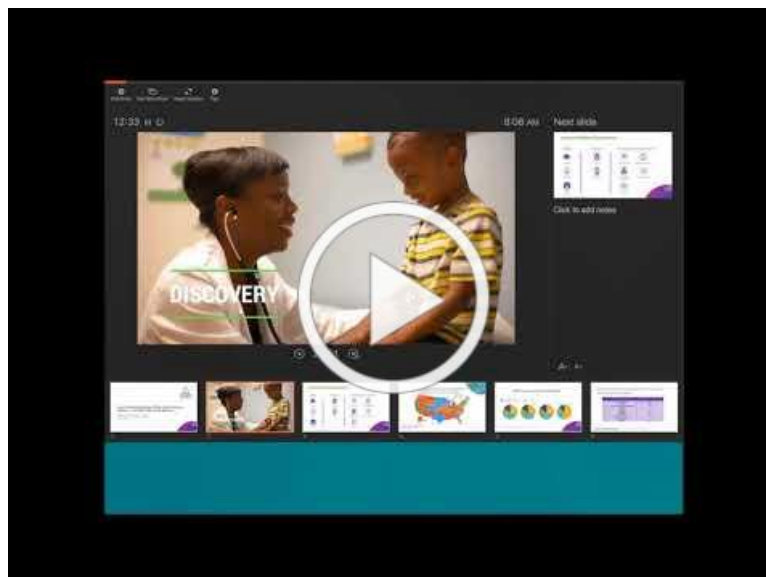


The National Center for Child Traumatic Stress has been approved by NBCC as an Approved Continuing Education Provider, ACEP No. 6647. Programs that do not qualify for NBCC credit are clearly identified. This program is approved by the National Association of Social Workers (NASW Provider #: 886476741) for 1 continuing education contact hour for each 1 hour NCTSN Training Presentation. The National Center for Child Traumatic Stress is approved by the American Psychological Association to sponsor continuing education for psychologists. The National Center for Child Traumatic Stress maintains responsibility for this program and its content. More information about this and other programs offered for continuing education credit is available on the NCTSN Learning Center at <https://learn.nctsn.org/cecredit>.

This series is funded by the Substance Abuse & Mental Health Services Administration, US Department of Health & Human Services.

[Click here to access webinar](#)

Webinar Recording: Healing the Long Term Effects of Adversity



Strategies Corner

The Six A's of Quality Education



The Six A's of Quality Education

Over the past several decades, developing countries have made remarkable progress in achieving quantitative education targets. Since the turn of the millennium, almost 50 million children around the world have gained access to basic education -...

[Read more](#)

blogs.worldbank.org

How to Set Enforceable, Loving Limits



"I Don't Like the Choices You're Choicing Me!": How to...

Does this scenario sound familiar? Marta has asked her 3-year-old, Ruby, to pick up her toys five times in the past 10 minutes. Annoyed, Marta finally shouts, "If you don't put your toys away right now, I'll throw them in the garbage."

[Read more](#)
www.pbs.org

What's Going On In Your Child's Brain When You Read Them A Story?



What's Going On In Your Child's Brain When You Read Them ...

"I want The Three Bears!" These days parents, caregivers and teachers have lots of options when it comes to fulfilling that request. You can read a picture book, put on a cartoon, play an audiobook, or even ask Alexa. A newly published study...

[Read more](#)
www.npr.org

Self-Control Shaped by Your 'In-Group' as Early as Preschool



Self-control shaped by your 'in-group' as early as preschool

How a child's social groups behave can significantly influence his or her ability to practice self-control and could have lasting impacts on development of this critical skill, according to a new CU Boulder study of 100 preschoolers.

[Read more](#)

www.colorado.edu

Early Childhood Health and Wellness Resources

WEBINARS

- **Implementing Otoacoustic Emissions (OAE) Hearing Screening and Follow-up: Self-Guided Learning Curriculum Webinar** July 17, 2018. 2:00 PM Eastern
- **MyPeers Orientation** July 18, 2018 12:00 PM Eastern and/or July 23, 2018. 4:00 PM Eastern
<https://register.gotowebinar.com/rt/6926439854287842305>
- **Making the Most of MyPeers: Advanced Orientation Webinar** July 18, 2018. 1:00 PM Eastern
<https://register.gotowebinar.com/rt/3585020724831363331>
- **Connecting to Community Health and Wellness Partners to Enhance Professional Development months** July 19, 2018. 2:00 PM Eastern
<https://cc.readytalk.com/registration/#/?meeting=qrt2kq4ttnkf&campaign=k5pdcbou1oc3>
- **Feeding Infants: 0-5 months** July 19, 2018. English at 2:00 PM Eastern and in Spanish at 3:00 PM
<https://www.cacfp.org/resources/thirty-thursdays/>
- **Let's Get Ready: Planning Together for Emergencies** July 23, 2018. 8:00 PM Eastern
<https://usa.childcareaware.org/preparednesswebinars/>

NEWS

- **Exposures to Buprenorphine Reported to Poison Control Centers Have Increased Among Children as Opioid Crisis Continues**
<https://www.aap.org/en-us/about-the-aap/aap-press-room/pages/Exposures-to-Buprenorphine-Reported-to-Poison-Control-Centers-Have-Increased-Among-Children-as-Opioid-Crisis-Continues.aspx>

- **Emotional Development Training May Benefit Early Childhood Depression**
<https://www.medpagetoday.com/psychiatry/depression/73594>
- **Baby Teeth May Predict Autism**
<https://www.medpagetoday.com/neurology/autism/73203>
- **Phone App That Screens for Autism in Children Is Beneficial** (see Autism Apps under Children with Special Health Care Needs)
<https://www.upi.com/Study-Phone-app-that-screens-for-autism-in-children-is-beneficial/4511527868180/>
- **ADHD Higher in Preterm Babies, Especially Girls**
<https://www.medpagetoday.com/neurology/adhd-add/73679>
- **Study: Better Fluoridated Water Access Leads to Less Tooth Decay**
https://www.upi.com/Health_News/2018/06/14/Study-Better-fluoridated-water-access-leads-to-less-tooth-decay/1731528990687/
- **37 US Children Die in Hot Cars Each Year, Report Says** (see Look Before You Lock under Safety & injury Prevention)
<https://edition.cnn.com/2018/06/12/health/hot-car-deaths-study/index.html>
- **Expectant Parents Encouraged to Visit Pediatrician Before Birth of Baby**
<https://www.aap.org/en-us/about-the-aap/aap-press-room/pages/Expectant-Parents-Encouraged-to-Visit-Pediatrician-Before-Birth-of-Baby.aspx>

Share your ideas or questions with us!



[Click here to share](#)

Are you a new subscriber? [View previous SEFEL newsletters here](#)

Highlights

SEFEL OMS Release 1.0 is now live!
[Visit the SEFEL Outcomes Monitoring System \(OMS\)](#)

Maryland's Early Childhood Mental Health Consultation Project 2018 Legislative Brief

[ECMHC 2018 Legislative Brief](#)

This legislative brief describes the outcomes of the early childhood mental health consultants activities entered into the OMS system for the 2016-2017 fiscal year indicating general improvements in classroom climate and teacher and parent reported behavior after consultation.

Maryland SEFEL Pyramid Model Master Cadre [Maryland SEFEL Pyramid Model Master Cadre Overview](#)

This year Maryland, with guidance from the National Pyramid Consortium, launched a cadre of the state's expert trainers and coaches in the SEFEL Pyramid Model to support best practice implementation across the state.

Goal of the Cadre: Our goal is to build and grow capacity and fidelity to the SEFEL Pyramid Model across the state. This Cadre follows a model replicated in other states facilitated by the National Pyramid Consortium to develop a statewide network of experts in the Pyramid Model and invest in their ability to support the early childhood workforce, young children, and families in a variety of settings.

Cadre Objectives: *Individualized agendas will be developed for each webinar with cadre member attendance taken each time.*

- Review Practice Based Coaching and discuss Master Cadre Member's implementation of the model within their SEFEL work
- Hear from Pyramid Consortium Leadership on SEFEL Training & Coaching Fidelity Measures
- Review data entry and management into the OMS System
- Discuss local and state mechanisms for Pyramid Model training and coaching sustainability

Build-A-Policy: Positive Behavioral Practices

Approved T-POT Assessors

The T-POT is the SEFEL Fidelity Tool.

Updated July 2018:* **View those who have taken the T-POT training and are reliable in the tool.

If you believe you are reliable in the T-POT but your name is not on the list please contact piec@ssw.umaryland.edu. Also contact us if you have any questions.

Mental Health Consultation Tool Kit

The Infant/Early Childhood Mental Health Consultation (I/ECMHC) Learning Module

Visit our Website

<https://theinstitute.umaryland.edu/sefel/>